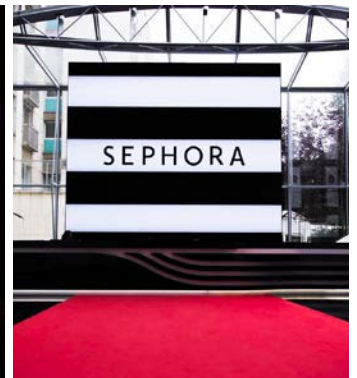


INDOOR LED VIDEO WALLS



► Application

Dakco Indoor LED Video Walls are clear and sharp in up-close viewing distance. They are chosen by brands such as Louis Vuitton, Christian Dior, and installed in Sephora's new headquarters building in Paris.

Spirit of Simplicity

With pitch smaller to 1.875mm, refresh rate higher to 3840Hz, 16bit processing depth and 281 trillion colors, it recovers perfectly the stunning images & videos. And it is empowered by the spirit of simplicity.



Seamless Splicing Ensured by The Most Advanced Die-Casting Technology.



Concise Appearance.



Easy to Use - Magnetical Module Assembly & Disassembly; Quick Release Connectors.

Robust and Reliable

Superior to most indoor LED video walls you can source from China, this product is made from highest class components & materials to ensure the highest level robustness and reliability.



Top Class LEDs, 4-layer PCBs, MEANWELL UHP Series PSUs, Gold-plated Connector Pins.



Sealed Cabinet Back, Moisture & Dust Proofing..



Adequate Internal Space, Effective Cooling.

► LED Module



240x240mm P4, P3, P2.5, P1.875

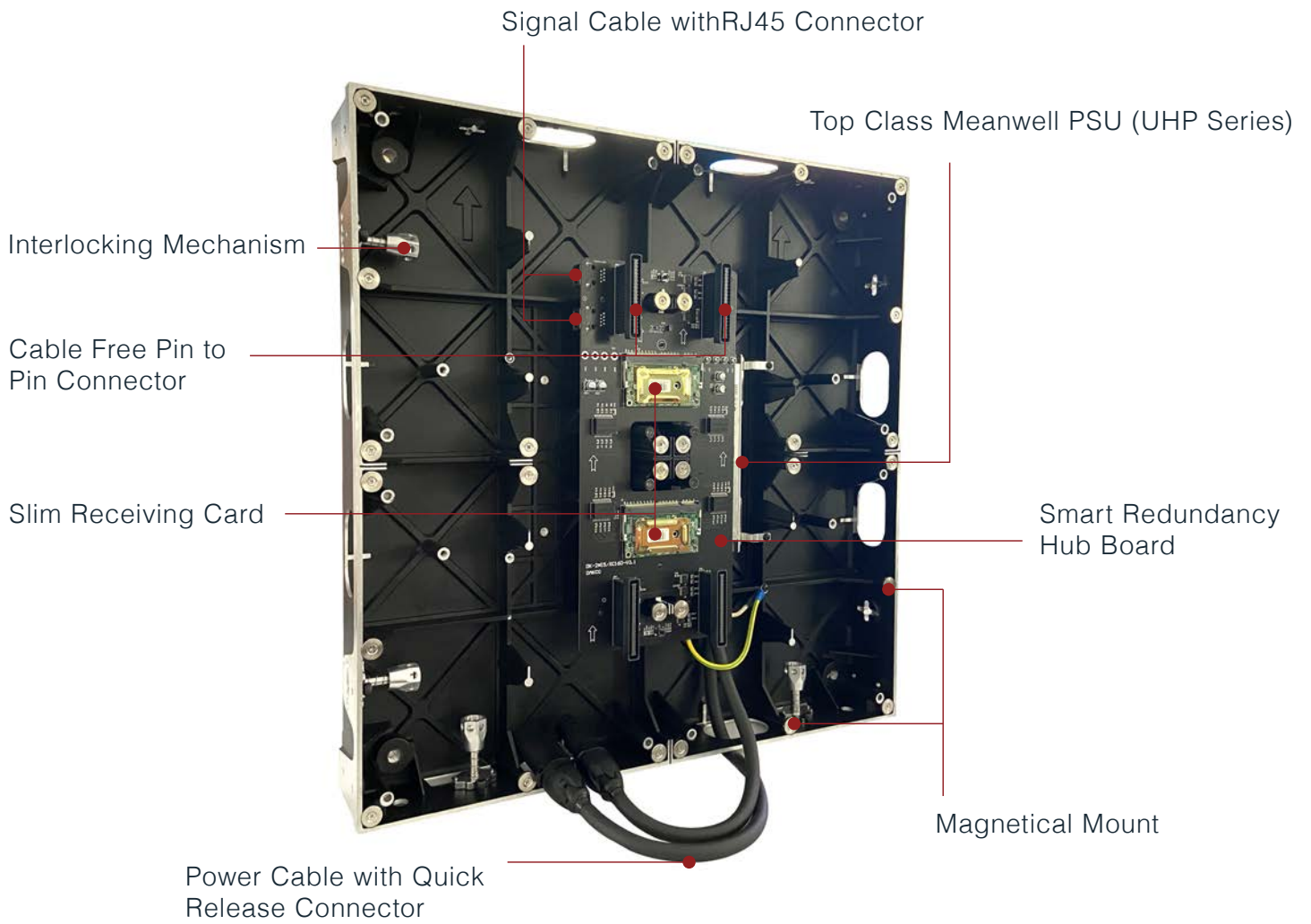
► LED Cabinet



Die-casting Aluminum

Options: 1. Aluminum Profile Cabinet
2. Creative Designs

Internal Components



► Magnetical Assembly & Disassembly

Specification

Pixel Pitch (Resolution)	4 mm	3 mm	2.5 mm	1.875 mm
LED Package Type	SMD	SMD	SMD	SMD
Pixels Per Sq. Meter (Density)	62,500	111,111	160,000	284,444
Module Dimensions	240mmx240mm	240mmx240mm	240mmx240mm	240mmx240mm
Module Matrix	60x60	80x80	96x96	128x128
Module Weight	0.5KG	0.5KG	0.5KG	0.5KG
Driving Method	1/15 constant current	1/20 constant current	1/32 constant current	1/32 constant current
Refresh Rate	≥3,840 Hz	≥3,840 Hz	≥3,840 Hz	≥3,840 Hz
Video Frame Rate	60 frames/second	60 frames/second	60 frames/second	60 frames/second
Grayscale	65,536 (281 trillion colors)	65,536 (281 trillion colors)	65,536 (281 trillion colors)	65,536 (281 trillion colors)
Color Depth	16 bit	16 bit	16 bit	16 bit
Contrast Ratio	3,000 : 1	3,000 : 1	3,000 : 1	3,000 : 1
Brightness	≥1,000 NITS	≥1,000 NITS	≥1,000 NITS	≥1,000 NITS
Brightness Control	256 levels	256 levels	256 levels	256 levels
Ideal Viewing Range	4m or greater	3m or greater	2m or greater	2m or greater
Ideal Viewing Angle	160°(H) / 120°(V)	160°(H) / 120°(V)	160°(H) / 120°(V)	160°(H) / 120°(V)
Max. Power Consumption	700W/m ²	700W/m ²	750W/m ²	750W/m ²
Avg. Power Consumption	230W/m ²	230W/m ²	250W/m ²	250W/m ²
Input Voltage	88 ~ 264VAC	88 ~ 264VAC	88 ~ 264VAC	88 ~ 264VAC
Operating Temperature	-20 °C - +50 °C	-20 °C - +50 °C	-20 °C - +50 °C	-20 °C - +50 °C
MTBF	>5,000 hours	>5,000 hours	>5,000 hours	>5,000 hours
LED Life - Span	100,000 hours	100,000 hours	100,000 hours	100,000 hours
Cabinet Size	480mmx480mm	480mmx480mm	480mmx480mm	480mmx480mm
Cabinet Material	Die-casting Aluminum	Die-casting Aluminum	Die-casting Aluminum	Die-casting Aluminum
Cabinet Weight	8 KG	8 KG	8 KG	8 KG

► Aluminum Profile Cabinet is Recommended to Match More Screen Sizes. Please Consult Our Sales for Details.



+86-755-2910-6150

sales@dakco.cn

www.dakco.cn www.led-displays-china.com

Building #2, Nangang 3rd Industry Park,
Tangtou Ave., Shiyan, Baoan, Shenzhen China